



# The Construction Lab

Dedicated to the Innovations of lifestyle avenues





# The Construction Lab

DEDICATED TO THE INNOVATIONS OF LIFESTYLE AVENUES

Inspirational innovation through radical, non- conventional, futuristic approach to construction underlie the operations at The Construction Lab. Founded by two young entrepreneurs with a thirst to create, not build, homes for a modern generation. The organization developed its unique style based on research and still more research into construction techniques, materials and methods. The result is a marvellous fusion of style , comfort , functionality and value. Homes researched, developed designed and created by The Construction Lab carry a lot of intrinsic value.

## THE LAB THAT INNOVATES HOMES

At The Construction Lab research is the key. Before implementing a project our team of experts from various fields carries out in – depth research on all aspects involving in the concept. It starts with the target segment for which we are designing and creating homes. We carry out an in –depth analysis of their tastes, preferences, lifestyles, expectations and their aspirations completely. After that we take into consideration the climate and weather conditions in the place where we will initiate the project and research all aspects of a design that will be best for the site.

Then we carry out research into the soil conditions, consider seismic data and integrate these into the design. Concern for environment is very much an important aspect of our operation and our environment experts deliver inputs that form a facet of our design. Green building technologies and energy savings relevant to the design under consideration are then incorporated into the design. Experts research the use of appropriate material relevant to the design concept.

## THE TEAM IN THE LAB

Inspired by dynamic youngsters with a thirst to create, our team comprises the most talented and creative group of experts from diverse fields. We have interior decorators, graphics experts, sociologist, architects, structural engineers, experts in arts and culture, experts in lifestyles and media and experts in the esoteric arts of Fengshuiamd Vaastu working as a coherent and fine tuned unit to provide exceptionally creative and radically innovative homes.

We have the latest computers and software technologies to carry out analysis and research into material, designs, create 3D models and virtual walkthroughs to visualize a home before it is actually constructed. It takes moths of collaborative work to create a harmonized design concept because of our sincere focus on intensive research into all aspects that go into making of a home.

## OFFICE ADDRESS

UG 5&6, Ansal Chamber 2,  
BhikajiCama Place, New Delhi - 110066



# Independent floor housing

Fully furnished luxurious floor with 3 spacious & comfortable bedrooms, drawing cum dining and a modular kitchen



Spanning across a hefty piece of 300 sq. yards land, the property is located at the most preferential and premium location just beside Hilton Double Tree Hotel, on Golf Course Road. It's a corner plot which is 3-sides open and surrounded by green belt on 2 sides.

The property is aesthetically designed by a renowned team of architects from none other than **City Space' 82 Architects**, and the interior is done by **Essentia Environment** in a more than perfect manner. Each floor has terrace garden with well-furnished waiting lounge in stilt. Add to that, each floor has ample space for parking 2 cars comfortably.

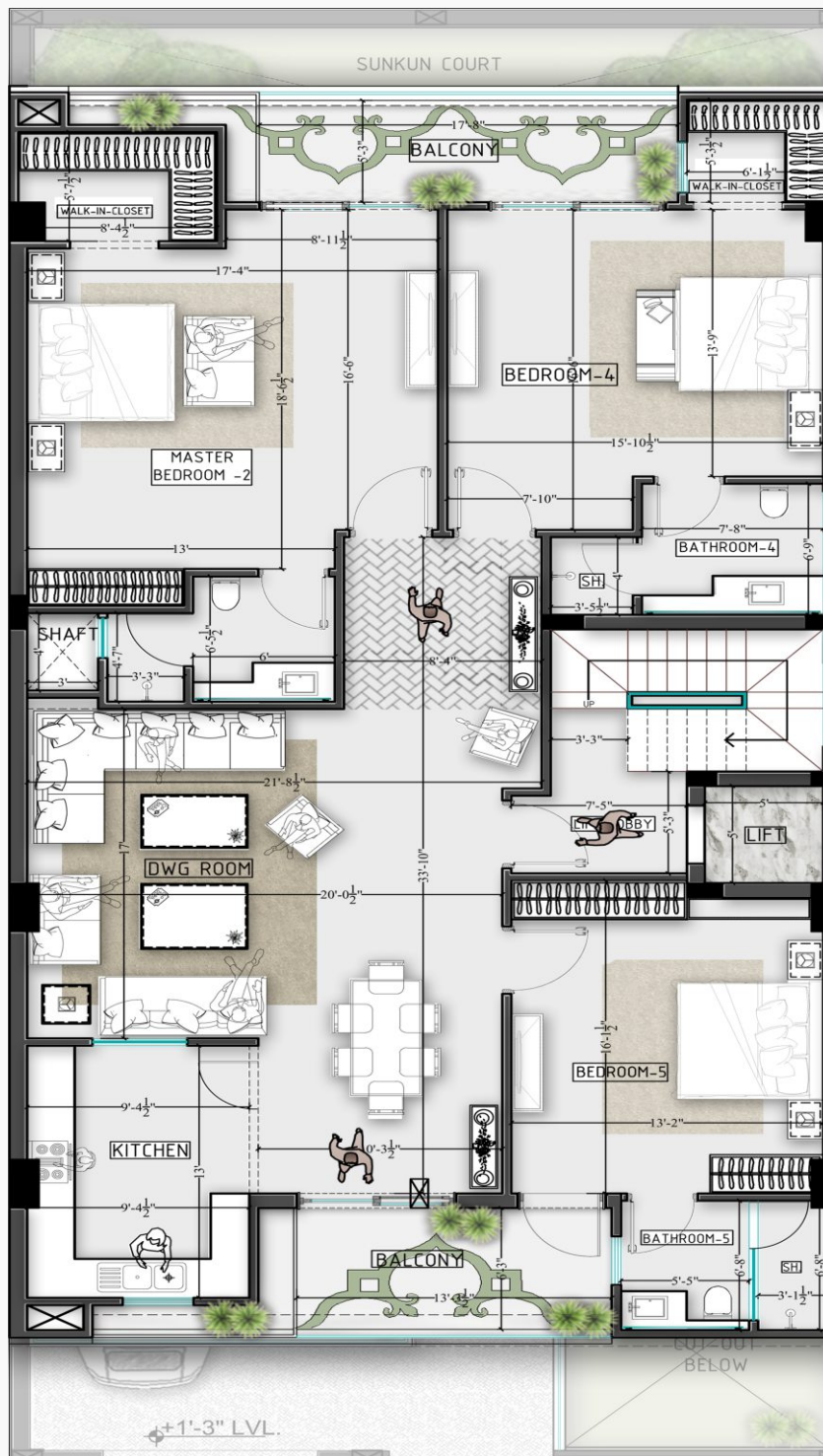
## SPECIAL HIGHLIGHTS

Fully Furnished		Modular Kitchen		Italian Flooring
Vastu Compliant		Earthquake Resistant		Fully Airconditioned



# Floor Plan

With a spacious 1800 square feet, this luxury home offers you efficient use of space and living with all amenities



## FIRST & SECOND FLOOR

### AREAS

#### FIRST & SECOND FLOOR

- ◆ Master Bedroom 2 : 330 sqft
- ◆ Master Bedroom 2 Closet : 50 Sqft
- ◆ Master Bedroom 2 Bathroom : 60 Sqft
- ◆ Bedroom 4 : 270 sqft
- ◆ Bedroom 4 Closet : 35 sqft
- ◆ Bedroom 4 Bathroom : 70 Sqft
- ◆ Living Room : 375 sqft
- ◆ Dining Room : 115 sqft
- ◆ Kitchen : 125 sqft

#### UPPER GROUND FLOOR

- ◆ Master Bedroom 1 : 380 sqft
- ◆ Master Bedroom 1 Closet : 60 sqft
- ◆ Master Bathroom1 : 95 sqft
- ◆ Bedroom 3 : 215 sqft
- ◆ Bathroom 3 : 85 sqft
- ◆ Dining Room : 225 sqft
- ◆ Kitchen : 155 sqft

#### BASEMENT

- ◆ Bedroom 1 : 280 sqft
- ◆ Bedroom 1 Closet : 70 sqft
- ◆ Bathroom 1 : 95 sqft
- ◆ Bedroom 2 : 225 sqft
- ◆ Bathroom 2 : 95 sqft
- ◆ Living Room : 600 sqft
- ◆ Lounge : 130 sqft

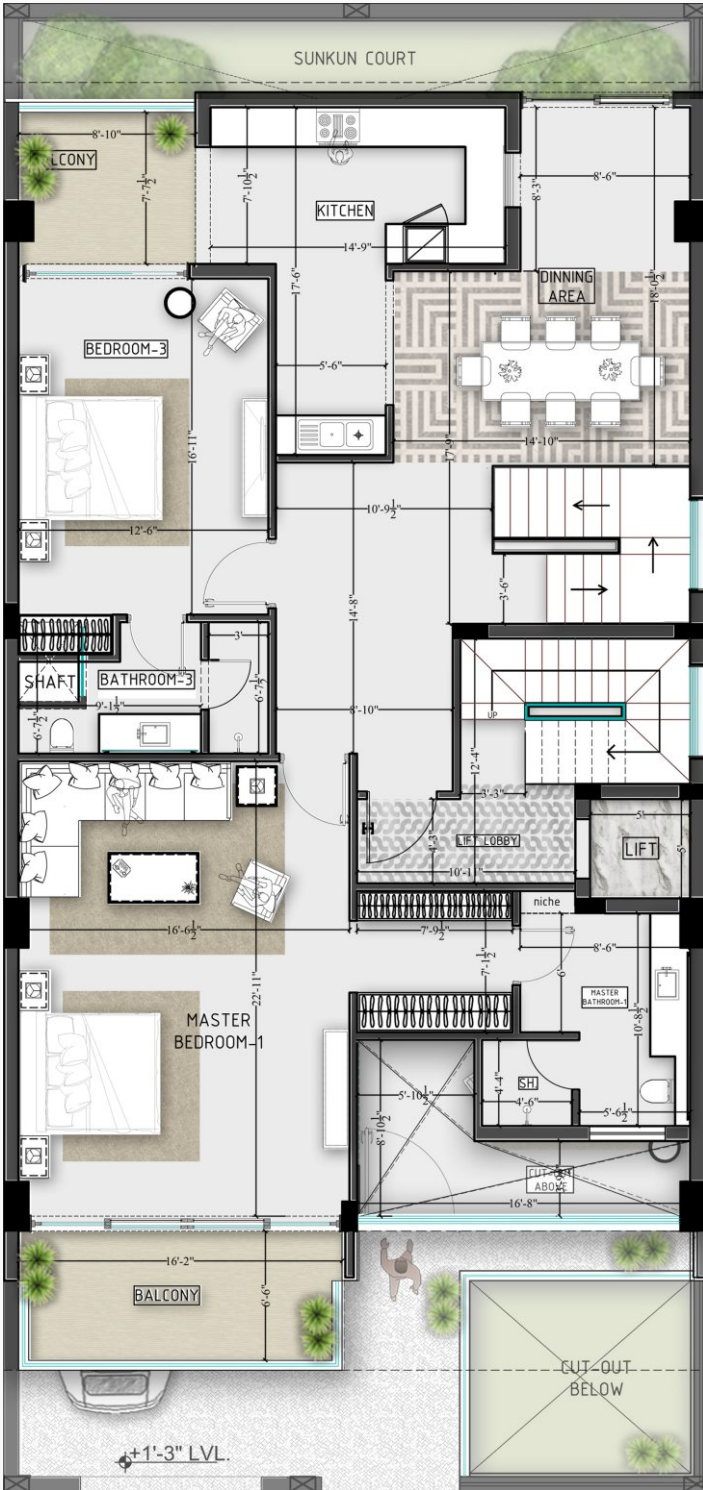
#### STILT FLOOR

- ◆ Entrance Lounge : 380 sqft
- ◆ Waiting Lounge/  
Entrance Foyer : 360 sqft

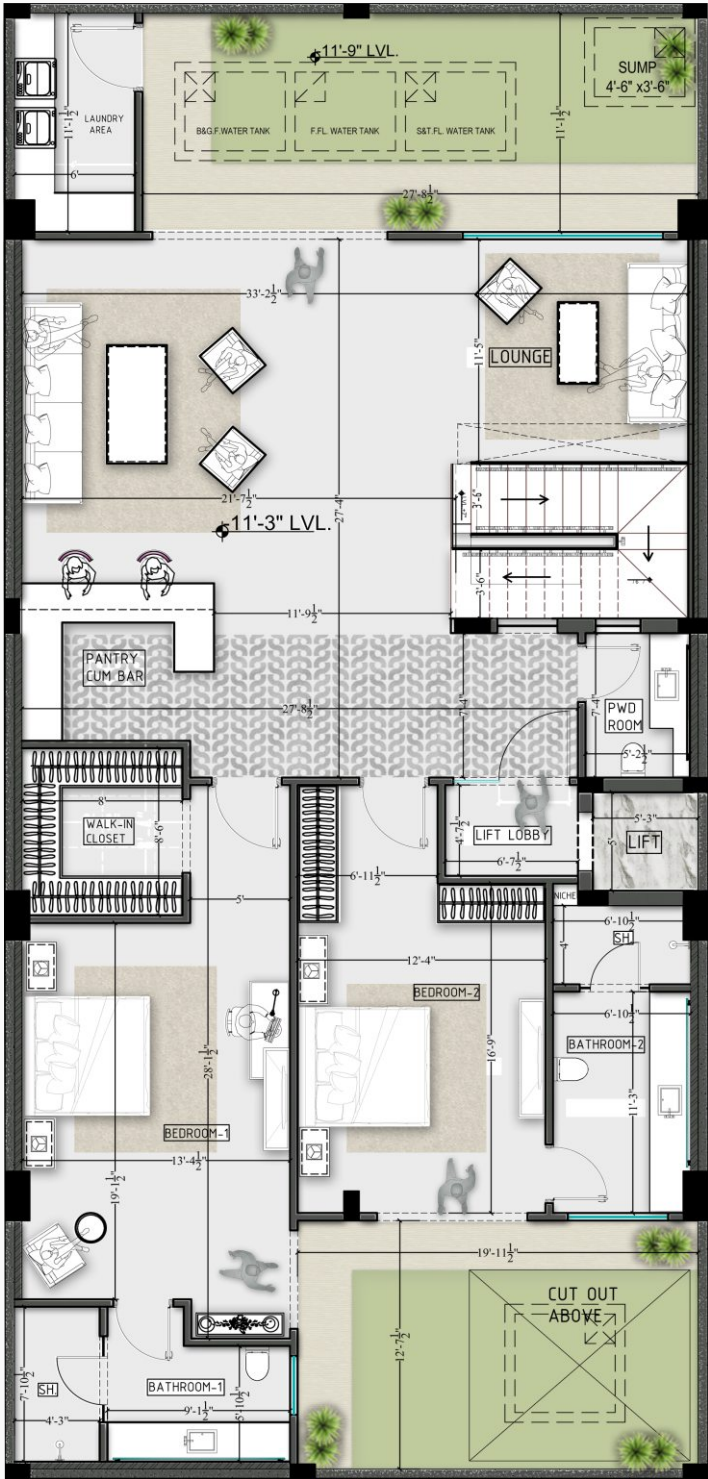


# Floor Plan

With a spacious 1800 square feet, this luxury home offers you efficient use of space and living with all amenities



UPPER GROUND FLOOR



BASEMENT

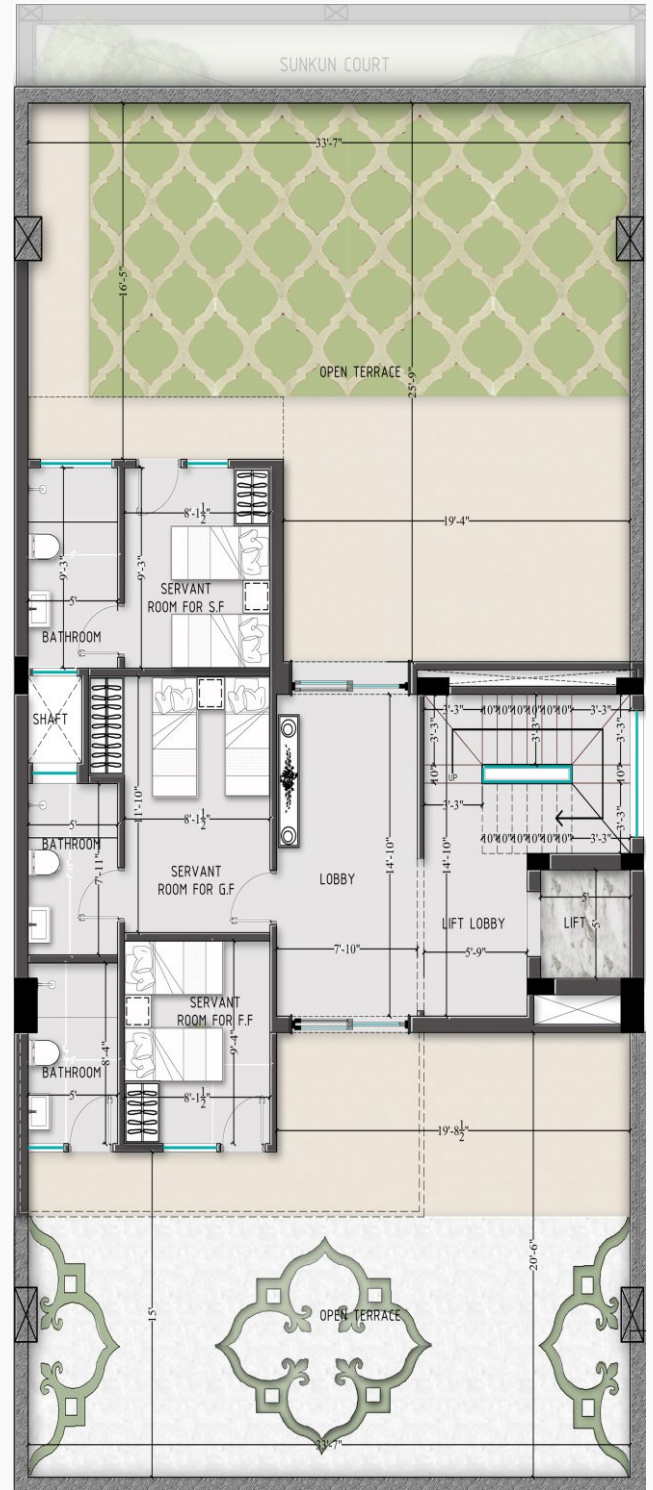


# Floor Plan

With a spacious 1800 square feet, this luxury home offers you efficient use of space and living with all amenities



# STILT FLOOR

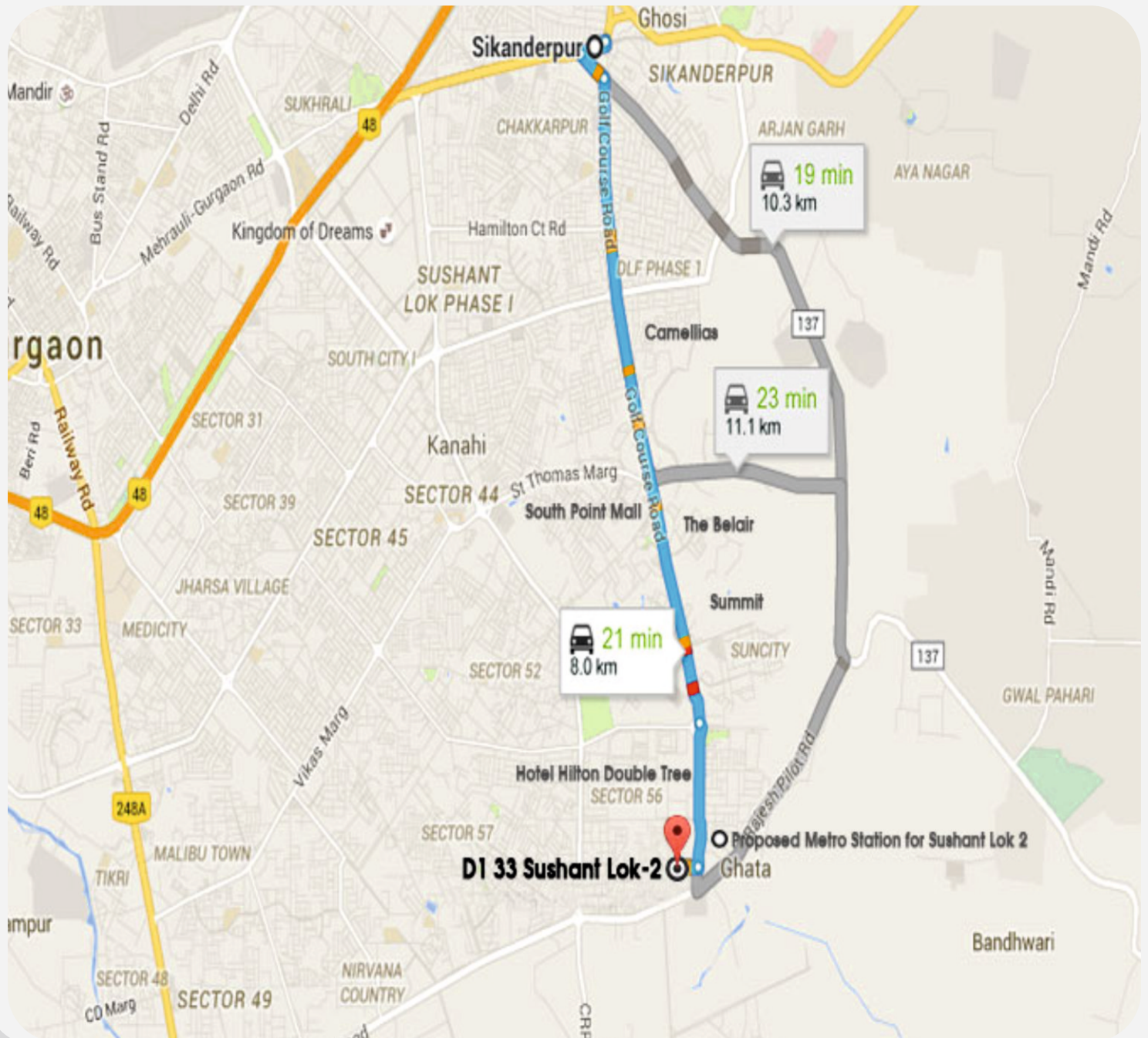


## TERRACE



# Location

With easy access to the National Highway, Shopping complex, Hospitals, School & Golf Courses, Hotels and a Proposed Metro station





Specifications Chart								
AREAS	WALLS	FLOOR	CEILING	DOORS	WINDOWS	ELECRICAL	FURNITURE	AIRCONDITIONERS
LIVINGROOM/ DINING/LOBBY	POP PUNNING WITH ACRYLIC EMULTION PAINT / PREMIUM DESIGNER WALL PAPER	IMPORTED MARBLE	POP PUNNING/ FALSE CEILING WITH ACRYLIC EMULTION PAINT /PREMIUM DESIGNER WALL PAPER	TEAK DOORS WITH MELAMINE POLISH	UPVC WITH TOUGHENED GLASS	PREMIUM LED LIGHTS	SEMI FURNISHED	DAIKIN AIR CONDITIONER
MASTER BEDROOM	POP PUNNING WITH ACRYLIC EMULTION PAINT / PREMIUM DESIGNER WALL PAPER	WOODEN FLOORING	POP PUNNING/ FALSE CEILING WITH ACRYLIC EMULTION PAINT /PREMIUM DESIGNER WALL PAPER	TEAK DOORS WITH MELAMINE POLISH	UPVC WITH TOUGHENED GLASS	PREMIUM LED LIGHTS	SEMI FURNISHED	DAIKIN CASSETTE AIR CONDITIONER
OTHER BEDROOMS	POP PUNNING WITH ACRYLIC EMULTION PAINT / PREMIUM DESIGNER WALL PAPER	WOODEN FLOORING	POP PUNNING/ FALSE CEILING WITH ACRYLIC EMULTION PAINT /PREMIUM DESIGNER WALL PAPER	TEAK DOORS WITH MELAMINE POLISH	UPVC WITH TOUGHENED GLASS	PREMIUM LED LIGHTS	SEMI FURNISHED	DAIKIN AIR CONDITIONER IN ONE ROOM
KITCHEN	PREMIUM TILES	IMPORTED MARBLE	POP PUNNING WITH ACRYLIC EMULTION PAINT /PREMIUM DESIGNER WALL PAPER	TEAK DOORS WITH MELAMINE POLISH	UPVC WITH TOUGHENED GLASS	PREMIUM LED LIGHTS	FULLY LOADED MODULAR ITALIAN KITCHEN WITH APPLIANCES	NA
MASTER TOILETS	GRANITE	GRANITE	POP PUNNING WITH ACRYLIC EMULTION PAINT /PREMIUM DESIGNER WALL PAPER	TEAK DOORS WITH MELAMINE POLISH	UPVC WITH TOUGHENED GLASS	PREMIUM LED LIGHTS	FULLY FURNISHED WITH GEYSER AND EXHAUST FAN	NA
OTHER TOILETS	PREMIUM TILES	PREMIUM TILES	POP PUNNING WITH ACRYLIC EMULTION PAINT /PREMIUM DESIGNER WALL PAPER	TEAK DOORS WITH MELAMINE POLISH	UPVC WITH TOUGHENED GLASS	PREMIUM LED LIGHTS	FULLY FURNISHED WITH GEYSER AND EXHAUST FAN	NA
BALCONIES/ TERRACES	WEATHER PROOF PAINT	GRANITE ANTI- SKID VITRIFIED TILES	WEATHER PROOF PAINT	TEAK DOORS WITH MELAMINE POLISH	UPVC WITH TOUGHENED GLASS	PREMIUM LED LIGHTS	SEMI FURNISHED	NA